

Intelligent Production System Control (IPCS) & IPCS PLUS

IPCS

Intelligent Production System Control (IPCS) & IPCS PLUS

IPCS

IPCS is an innovative platform for collecting data on the field (operating machines, instrumentation and apparatus) utilized in refrigeration, air conditioner and heat pump production lines.

IPCS collects and stores both process parameters and test results making them available to real-time monitoring and control applications. Due to its modularity, it easily adapts to pre-existing production environments, also manages third-party machinery, and implements “machine-to-machine” connections to optimize and synchronize certain work steps ensuring that products are manufactured and tested according to construction specifications. This makes it possible to solve daily challenges in a timely manner, optimizing processes and keeping the production flow in line with set goals.

Distinctive features:

- Interoperable and flexible;
- Manages FT and third-party machinery;
- Connects to third-party monitoring and control applications;
- Real-time functions;
- Technology and Industry 4.0.

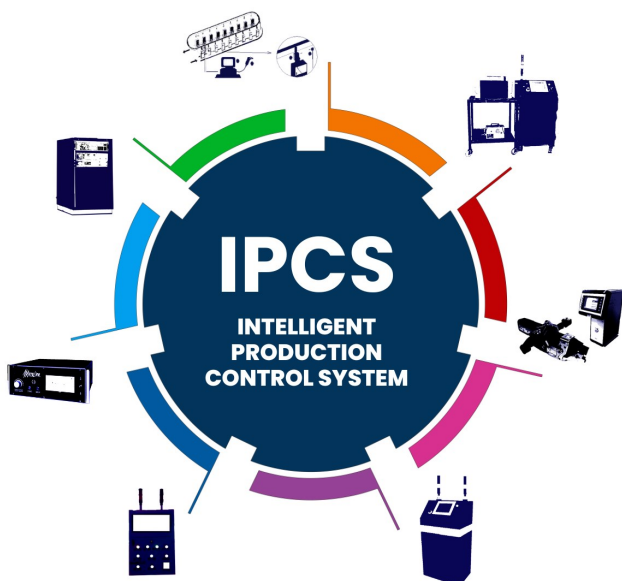
Benefits:

Upgradeable, Adaptable and Flexible: Can be modified to meet new needs or conditions effectively.

Data Collection: Stores all collected data such as measurements, statistics, alerts, reports. Data Storage Database provides access to specialized tools for statistics, maintenance, monitoring, and quality control to improve processing and reduce downtime.

Extendable: Ability to add functionality or extend scope or to include new elements or functions

Expandable: Ability to increase capacity or performance based on customer needs.



Connection with third-party monitoring and control applications already in the Customer's information system.



IPCS PLUS

Intelligent Production System Control (IPCS) & IPCS PLUS

IPCS PLUS (IPCS + Net@PRO)

IPCS PLUS is the result of the integration of IPCS with Net@pro, an advanced manufacturing execution system (MES) made by Qualitas spa that offers comprehensive factory control and management.

IPCS PLUS is an innovative platform designed for comprehensive monitoring, control and planning of air conditioner, chiller and heat pump production lines. It collects detailed data at every stage of processing, enabling real-time alarm monitoring. Its modularity allows IPCS PLUS to easily adapt to different production needs, making it highly configurable by customers. The platform features a simple, intuitive, and easy-to-use interface that improves quality standards, productivity, and real-time production status updates.

IPCS PLUS also enables remote production planning and modification, automatically synchronizing machines with the production plan. The platform manages process data and alarms, including monitoring of third-party machinery, ensuring that products are manufactured and tested according to specifications.

This enables timely resolution of daily challenges, optimizing processes and keeping the production flow in line with set goals.

IPCS PLUS Distinctive features:

- Monitoring and diagnosis
- Machine configuration
- Machine maintenance
- Web and APP access
- Data analysis and statistics
- Real-time production tracking



- Best software solution for Industry 5.0
- NET@PRO can also be provided in cloud mode.

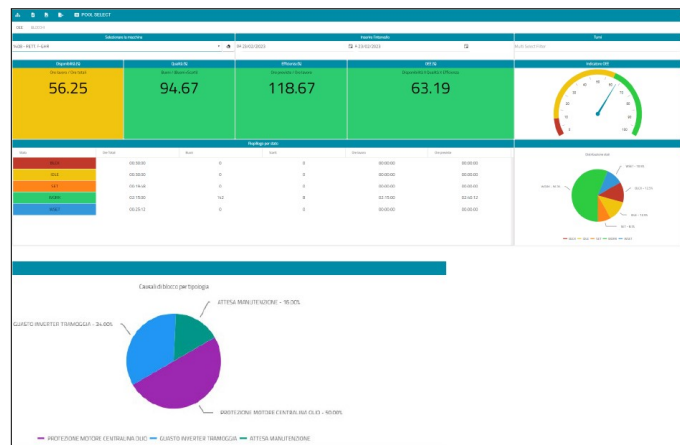
Modular: Composed of distinct, interconnected units that can be added, removed, or replaced independently. For example :

- Inventory management
- maintenance management

Extendable: Ability to add functionality or extend scope or to include new elements or functions

Expandable: Ability to increase the capacity or performance according to customer needs.

Interface example for the Production Management Area (MES)



30+ Years of experience both FT and Qualitas

700 FT running machines and Qualitas active customers

20.000 NET@PRO users

- Company Profile
- Vacuum and Charging units
- HC Refrigerants handling systems
- Special Units
- Vacuum and Charging Inletors
- Refrigerant transfer pump
- Pressure test units leak detectors
- Preliminary evacuation
- Electrical and functional test
- Ultrasonic tube sealers
- IPCS & IPCS PLUS