

# Intelligent Production System Control (IPCS) & IPCS PLUS

## IPCS

### Intelligent Production Control System (IPCS) & IPCS PLUS

## IPCS

IPCS is an innovative platform for collecting data on the field (operating machines, instrumentation and apparatus) utilized in refrigeration, air conditioner and heat pump production lines.

IPCS collects and stores both process parameters and test results making them available to real-time monitoring and control applications. Due to its modularity, it easily adapts to pre-existing production environments, also manages third-party machinery, and implements “machine-to-machine” connections to optimize and synchronize certain work steps ensuring that products are manufactured and tested according to construction specifications. This makes it possible to solve daily challenges in a timely manner, optimizing processes and keeping the production flow in line with set goals.

### Distinctive features:

- Interoperable and flexible;
- Manages FT and third-party machinery;
- Connects to third-party monitoring and control applications;
- Real-time functions;
- Technology and Industry 4.0.

### Benefits:

**Upgradeable, Adaptable and Flexible:** Can be modified to meet new needs or conditions effectively.

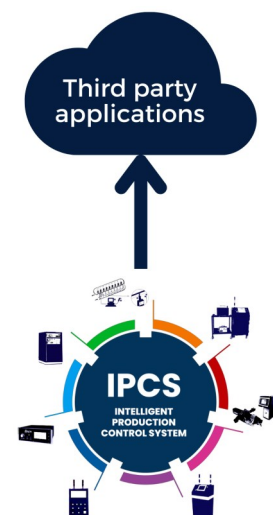
**Data Collection:** Stores all collected data such as measurements, statistics, alerts, reports. Data Storage Database provides access to specialized tools for statistics, maintenance, monitoring, and quality control to improve processing and reduce downtime.

**Extendable:** Ability to add functionality or extend scope or to include new elements or functions

**Expandable:** Ability to increase capacity or performance based on customer needs.



Connection with third-party monitoring and control applications already in the Customer's information system.



## IPCS PLUS

### Intelligent Production Control System (IPCS) & IPCS PLUS

## IPCS PLUS (IPCS + Net@PRO)

IPCS PLUS is the result of the integration of IPCS with **Net@pro**, an advanced manufacturing execution system (MES) made by **Qualitas spa** that offers comprehensive factory control and management.

IPCS PLUS is an innovative platform designed for comprehensive monitoring, control and planning of air conditioner, chiller and heat pump production lines. It collects detailed data at every stage of processing, enabling real-time alarm monitoring. Its modularity allows **IPCS PLUS** to easily adapt to different production needs, making it highly configurable by customers. The platform features a simple, intuitive, and easy-to-use interface that improves quality standards, productivity, and real-time production status updates.

IPCS PLUS also enables remote production planning and modification, automatically synchronizing machines with the production plan. The platform manages process data and alarms, including monitoring of third-party machinery, ensuring that products are manufactured and tested according to specifications.

This enables timely resolution of daily challenges, optimizing processes and keeping the production flow in line with set goals.

### IPCS PLUS Distinctive features:

- Monitoring and diagnosis
- Machine configuration
- Machine maintenance
- Web and APP access
- Data analysis and statistics
- Real-time production tracking



- Best software solution for Industry 5.0
- NET@PRO can also be provided in cloud mode.

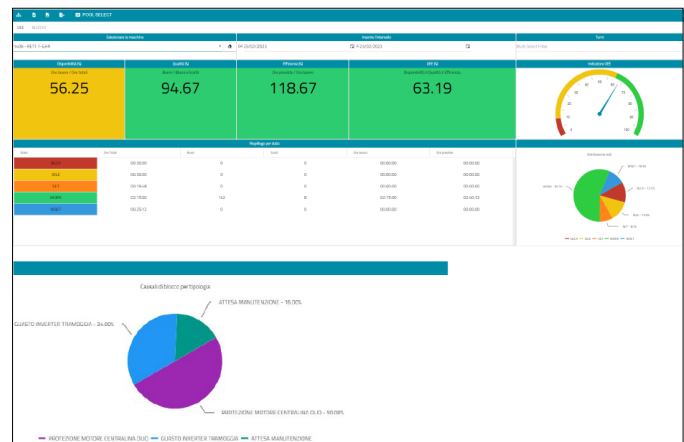
**Modular:** Composed of distinct, interconnected units that can be added, removed, or replaced independently. For example :

- Inventory management
- maintenance management

**Extendable:** Ability to add functionality or extend scope or to include new elements or functions

**Expandable:** Ability to increase the capacity or performance according to customer needs.

Interface example for the Production Management Area (MES)



**30+** Years of experience both FT and Qualitas

**700** FT running machines and Qualitas active customers

**20.000** NET@PRO users

- Company Profile
- Vacuum and Charging units
- HC Refrigerants handling systems
- Special Units
- Vacuum and Charging Injectors
- Refrigerant transfer pump
- Pressure test units leak detectors
- Preliminary evacuation
- Electrical and functional test
- Ultrasonic tube sealers
- IPCS & IPCS PLUS

# 智能生产系统控制 (IPCS) 和IPCS PLUS

## IPCS

### 智能生产系统控制 (IPCS) 和IPCS PLUS

## IPCS

IPCS是一个创新平台，用于收集制冷、空调和热泵生产线现场（操作机器、仪表和设备）数据。

IPCS收集并存储工艺参数和测试结果，用于实时监测和控制应用。由于其模块化，它可以轻松适应现有的生产环境，还可以管理第三方机械，并实现“机器对机器”连接，以优化和同步某些工作步骤，确保产品按照构造规范制造和测试。这样可及时解决日常挑战，优化流程并保持生产工艺符合既定目标。

- 可互操作且灵活；
- 管理FT和第三方机器；
- 连接第三方监控应用程序；
- 实时功能；
- 技术与工业4.0。

### 益处：

**可升级、适应性强且灵活：**可以进行修改，以有效地满足新的需求或条件。

**数据采集：**存储所有收集的数据，例如测量、统计、警报、报告。数据存储数据库允许访问统计、维护、监控和质量控制专用工具，以改进处理并减少停机时间。

**可扩展：**能够添加功能或扩展范围或包含新元素或功能

**可扩展：**能够根据客户需求增加容量或性能。

### 显著特点：



与客户信息系统中已有的第三方监控应用程序连接。



## IPCS PLUS

### 智能生产系统控制 (IPCS) 和IPCS PLUS

## IPCS PLUS (IPCS + Net@PRO)

IPCS PLUS是IPCS与Net@pro集成的结果，后者是Qualitas spa制造的先进制造执行系统(MES)，可提供全面的工厂控制和管理。

IPCS PLUS是一个创新平台，专用于空调、冷水机和热泵生产线的全面监控、控制和规划。它收集处理每个阶段的详细数据，实现实时警报监控。凭借模块化，他使IPCS PLUS能够轻松适应不同的生产需求，实现客户的高度配置自由。该平台具有简单、直观且易于使用的界面，可提高质量标准、生产力并实时更新生产状态。

IPCS PLUS还允许实现远程生产计划和修改，自动将机器与生产计划同步。该平台管理过程数据和警报（包括监控第三方机械），确保产品按照规格制造和测试。

这样可以及时解决日常挑战，优化流程并保持生产工艺符合既定目标。

### IPCS PLUS特色：

- 监测和诊断
- 机器配置
- 机器维护
- 网页及APP访问
- 数据分析与统计
- 实时生产跟踪
- 工业5.0的最佳软件解决方案
- NET@PRO也可以以云模式提供。



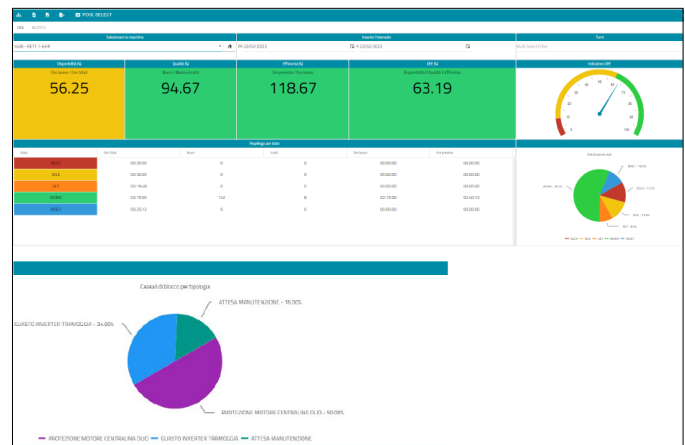
**模块化：**由不同的、互连的单元组成，这些单元可以独立添加、删除或替换。示例：

- 盘点管理
- 维护管理

**可扩展：**能够添加功能或扩展范围或包含新元素或功能

**可扩展：**能够根据客户需求增加容量或性能。

生产管理区域 (MES) 的界面示例



- 30+** FT和 Qualitas多年经验
- 700** FT运行机器和 Qualitas活跃客户
- 20.000** NET@PRO用户